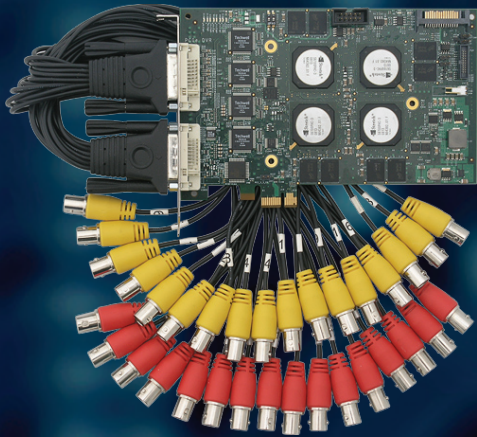


VRC6016 H.264 PCIe DVR Add-in Card

**16 Channels of D1, 480fps
Multiple CODECS, Multi-Stream Support
Encode and Decode**



■ Unsurpassed Channel Density

- World's Only 16 Channel D1 DVR Card
- Short Form-factor PCIe Add-in Card
- Lowest Cost Per Channel

■ See the Entire Picture

- Full D1/4CIF Resolution in Real Time
- True H.264 Encoding — Compatible with Industry Standard Players
- High Quality Video Processing

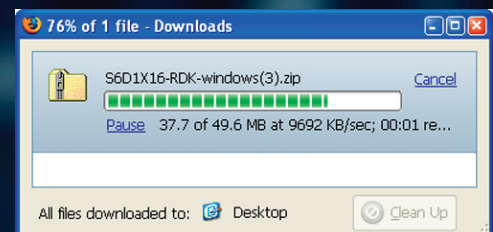


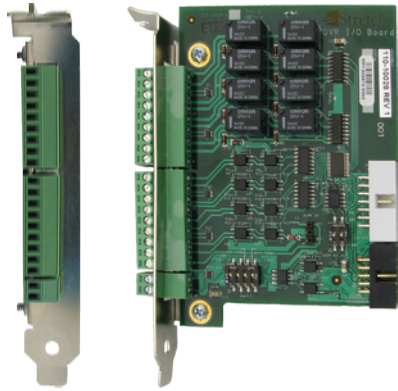
■ Fast Time-to-Market

- Use Your Current DVR Software
- Firmware Preconfigured to Deliver Optimal System Performance
- Card and Cables FCC and CE Certified

■ Future-Proof

- Software Upgradable in the Field
- Simple Transition to New Features and Standards
- No More Obsolete Inventory





Alarm I/O Daughter Card



16-BNC Audio Cable

16-BNC Video Cable

Specifications	
Input Type	DVI-D Connector (Vp-p = 1V, 750hms)
Video Inputs	16 Channels NTSC/PAL
Audio Inputs	16 Channels
Maximum Input Video Resolution	D1 (720 x 480 @ 30fps NTSC) (720 x 576 @25fps PAL)
Recording Video Resolution	Full D1 (720 x 480 NTSC) (720 x 576 PAL) CIF (360 x 240 NTSC) (360 X 288 PAL) QCIF (180 x 120 NTSC) (180 x 144 PAL)
Video Compression Format	H.264, MPEG4, MJPEG Supported compression modes: VBR, CBR, Constant Quality Ability to dynamically control frame rate and resolution using embedded analytics
Recording Rate at Full D1 Resolution	480fps NTSC, 400fps PAL
Audio Recording Format	G.711 (8K samples per second)
Video Output	Analog Spot Monitor Out (720 x 480 NTSC) (720 x 576 PAL) Modes: • User-defined tiles of input video • Timed slide show of input video channels
Form Factor	PCIe short form-factor PC add-in card Dimensions (in mm): 167.5 (W) x 98.4 (H)
Video Preprocessing	De-interlacing (NTSC and PAL interlaced source) User-defined captioning overlays
Embedded Analytics	Motion detection Blind and tamper detection Night detection
Regions of Interest	User-selectable regions of interest to target analytics
Privacy Regions	User-selectable privacy regions
Trigger Inputs	16 isolated inputs (available on accessory daughter card) 16 alarm relay outputs (available on accessory daughter card)
Regulatory	
Regulatory Certification	FCC, CE
Minimum System Configuration	
Processor	Application-dependent (Dual-core P4 > 2GHz recommended)
Memory	Application-dependent (1GB recommended)
Interface	One available PCIe slot
Operating System Support	Windows XP Linux

Stretch Inc.

1322 Orleans Drive
Sunnyvale, CA 94083
tel 408.543.2700 • fax 408. 747.5736
www.stretchinc.com

All information contained in this document is subject to change without notice.
For more information, visit our web site at www.stretchinc.com
© 2008, Stretch Inc. All rights reserved. Stretch, the Stretch logo and
Extending the Possibilities are registered trademarks of Stretch Inc.